

## An abundance of biodiversity awaits you



Scarlet dragonfly



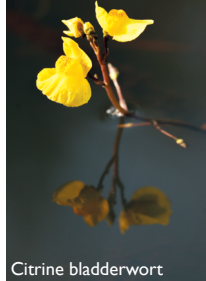
Dwarf gorse



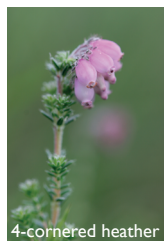
Red deer



Elegant agrion



Citrine bladderwort



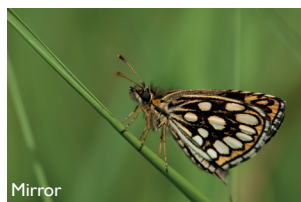
4-cornered heather



Green lizard



Green frog and white water lily



Mirror



Anax emperor

More than 2,500 animals, plants and mushrooms live alongside these essential species. You will need a little patience, luck and, above all, a little knowledge to be able to observe them. Follow the guide...

The Pinail nature reserve is a protected area, accessible only on foot. To ensure the preservation of the site, please respect the regulations.



## What you need to know

- Free access to the trail all year round
- Partial accessibility for people with reduced mobility or cart loan
- Guided tours and nature outings for the general public
- Educational activities and training for groups
- Reception and information for the public

## Recommendations

Remember to equip yourself according to current weather conditions (hat, water bottle, waterproof clothing, etc.)



**Information and contact**  
GEREPI - Moulin de Chitré  
86210 Vouneuil-sur-Vienne  
contact@reserve-pinail.org

05 49 02 33 47

[www.reserve-pinail.org](http://www.reserve-pinail.org)



## Partenaires financiers



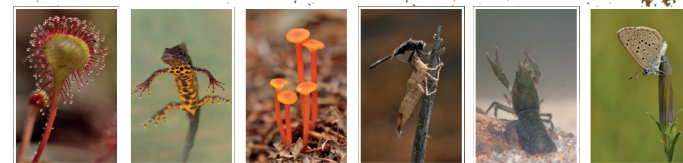
La Nouvelle-Aquitaine et L'Europe



Réserve Naturelle Nationale  
**PINAIL**

## Explore the secret life of moors and ponds of Pinail

Design: Vibrato - Illustrations: N. Vignaud, Artprintsadec, Freepik - Photos: J.G. Couteau / G.M. Cogné, Y. Sallier, L. Bourdin, A. Andrieu, PowerUp - N. Mahu / CAGC



**An experience between real and virtual**  
*to live and to share*



## A heart of wilderness shaped by man

Pinail is a real jewel of biodiversity. Underneath its natural appearance, the site is in fact the largest millstone quarry in the world. Today, nature has regained its rights and thousands of species have found refuge in this vast expanse of moorland riddled with thousands of ponds. The Pinail National Nature Reserve preserves this original heritage by perpetuating traditional uses: heath cutting, grazing, and burning. Here, scientists watch over the fragile balance between man and nature, and the guides reveal the mysteries of an unusual and luxurious biodiversity. Let yourself be surprised by Pinail's landscape, where incredible stories are told, and by the thousands of species that thrive in each pond, peat bog, heath or meadow.



## A step-by-step exploration

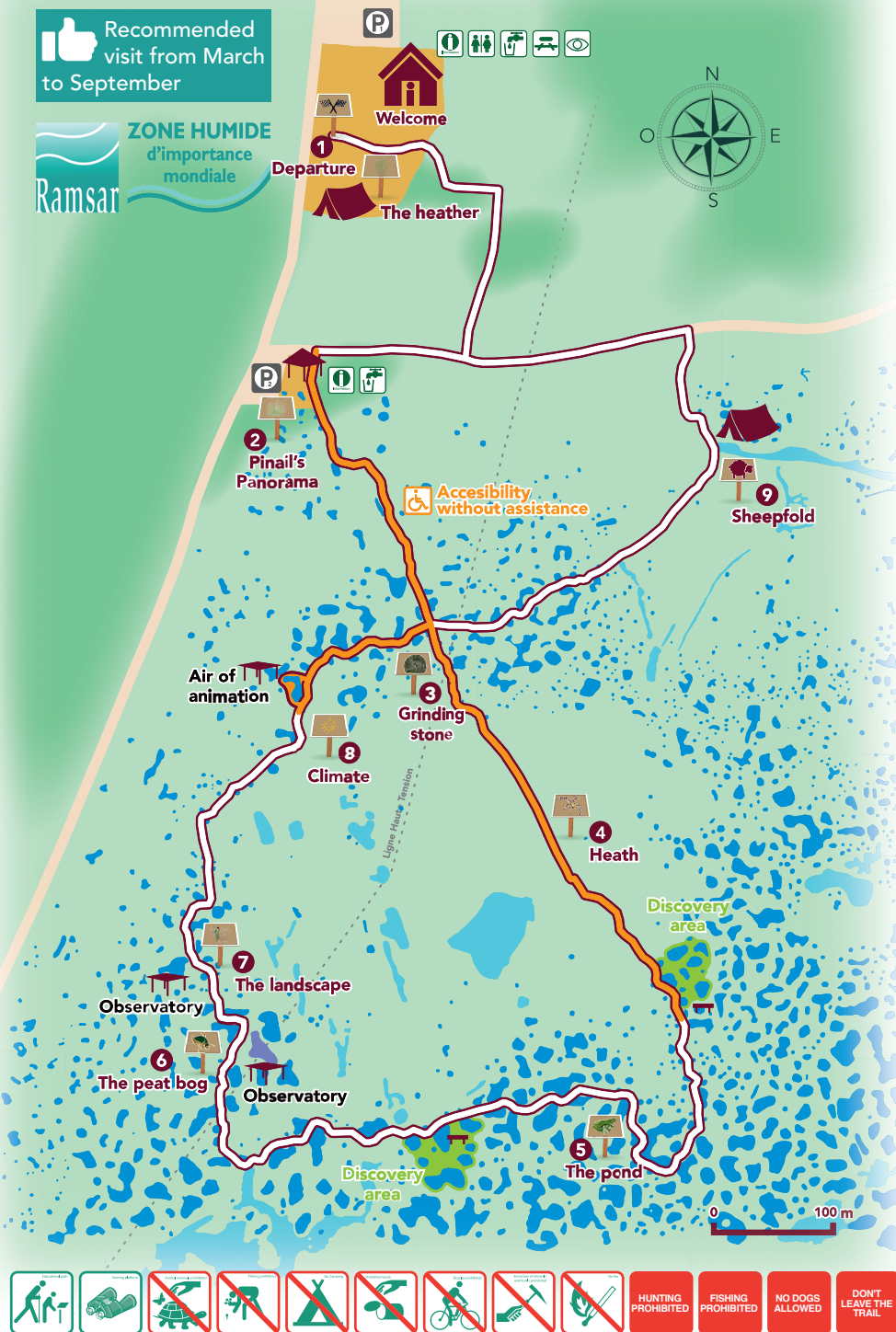
The nature reserve trail offers you a 2-kilometre long, free access route. A walk of about 2 hours assisted by information panels, observatories and discovery areas to guide you through the heart of the Pinail.



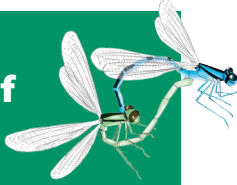
The invisible at your fingertips  
with digital technology

Recommended visit from March to September

Ramsar ZONE HUMIDE d'importance mondiale



## The digital interface of the trail



Flying over Pinail, diving in its ponds, relive the epic of the grinding stone, follow the passage of fire on the moors, observe the birth of a dragonfly or even the meal of a carnivorous plant... are all experiences that you can have thanks to digital technology.

- Free download on mobile, tablet and computer
- Tablets available at the reception



[sentier.reserve-pinail.org](http://sentier.reserve-pinail.org)